

Sage 500 ERP



Customization Tools

Your business is unique. Sage 500 ERP (formerly Sage ERP MAS 500) allows you to customize its entire system to match your specific needs. Powerful and flexible customization tools allow you to easily modify screens, business intelligence, and reports.

The customization tools also provide a foundation for integrating Sage 500 ERP with other applications, and for developing Microsoft®-based business applications for the SQL Server® environment that are compatible with Sage 500 ERP. With Source Code, you can tailor the entire Sage 500 ERP system to your unique business needs.

Unlike other systems that force you to change your processing to match the system, Sage 500 ERP gives you the flexibility to run your business the way you want to. Customizations can improve efficiency and boost productivity while maintaining data integrity.



BENEFITS

- Quickly and easily customize screens without modifying source code
- Easily get the information you need exactly the way you want it by customizing financial and operational reports
- Personalize business intelligence and key performance indicators to quickly get information that is most valuable to your business
- Extend your ERP solution by integrating data from custom applications and third-party systems
- Rapidly develop custom add-ons with the look and feel of Sage 500 ERP

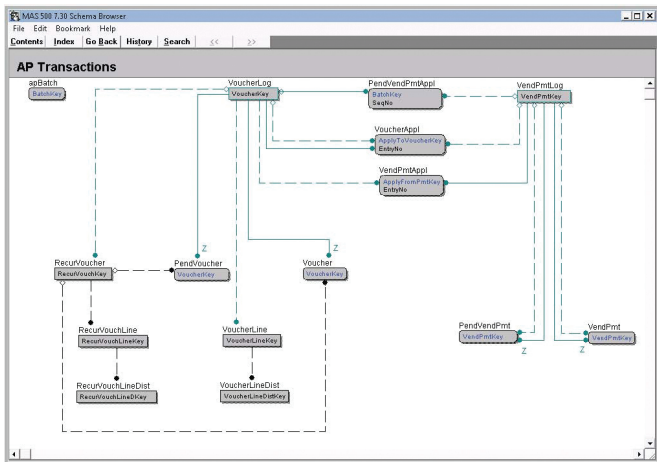
- Powerful and flexible customization tools allow you to easily modify screens, business intelligence, reports, integrations, and system processing.

Custom Screens

Customizer

The Customizer module lets you modify the screens used with any Sage 500 ERP business application—without modifying the Source Code. Unlike typical customization tools, all changes are stored independently, enabling changes to be reapplied automatically to updated versions of your applications. Customizations can be applied to selected users or groups.

Customizer integrates tightly with Sage 500 ERP, and third-party applications written using Software Development Kit, adding a hot key, which is available on all screens. The Customizer module provides the user interface plus the look and feel of Sage 500 ERP applications. You can change the properties of existing controls and hide controls that are not needed on a form. Furthermore, you can add procedural code to the form using Microsoft VBScript or JScript software, enabling business logic. Customizer includes scripting languages for defining custom processes and adding functionality (for example, attaching a script to a button on a form or an event procedure behind a control).



- The Sage 500 ERP Schema Browser provides detailed database schema information needed to customize reports, including entity relationship diagrams, and complete documentation.

Custom Business Intelligence

Business Insights Dashboard

Busy executives have a real-time overview of vital business operations and key performance indicators with this customizable web-based dashboard. Dashboards can be personalized for each user, with security enabled to control the information that each user can view. New custom data views (Web Parts) can also be created in Visual Studio.NET, allowing you to track almost any business scenario imaginable.

Business Insights Explorer

Business Insights Explorer brings ad hoc inquiry, drill-down, and drill-around analysis up to a whole new level. Powerful sorting, grouping, and filtering capabilities let you easily define the data you want to see and the way you want it presented, and save those custom preferences for future use.

Business Insights Analyzer

Business Insights Analyzer is an intuitive, easy-to-use analytics tool included with Sage 500 ERP. Information is provided in a logical grid format and can be customized with powerful filtering, grouping, and sorting capabilities that let you organize the data to complete the task at hand. Columns can be added, removed, or rearranged, and data can be viewed in grids, pivot tables, or charts. Multiple custom configurations can be created and saved for future use.

Custom Reporting

SAP® Crystal Reports for Sage 500 ERP

Custom reports are just minutes away with SAP Crystal Reports for Sage 500 ERP, empowering you to customize each report with specific option choices, sort preference, and selection criteria. Customized reports can be saved and run anytime.

Sage 500 ERP Business Intelligence

Save time and get more accurate reports by eliminating redundant data entry efforts through direct integration with Sage 500 ERP. By pulling information already in your system, Business Intelligence automatically knows your fiscal periods, chart of accounts, detail transactions, and various types of balances. A set of basic report templates is provided with your system, which you can personalize to work the way you do, so you can focus on interpreting information to make faster, better business decisions. Easily create new reports by modifying the basic set of templates or design totally new reports utilizing the Report Designer tool. Templates include: Financial Analysis Reports, Dashboard Analysis, General Ledger Transaction Details, Inventory Master, Purchase Master, and Sales Master.

Custom Integration

Data Import Manager

Quickly and easily import selected data from external applications such as third-party payroll systems, billing services, in-house databases, and much more. Built with .NET and SQL Server SSIS technology, this robust database mapping tool includes a simple graphical interface that lets you map data fields and import data directly from a wide variety of source databases.

You have the power to customize how and when data import jobs run. Set the import to run automatically every day, every hour, or every minute—and you can even chain imports together. By leveraging the power of database scripting and SQL Server SSIS, you can even instruct the program to run a script file automatically before the import, after an error occurs, or upon successful completion of an import.

SQL Server APIs

The Sage 500 ERP SQL Server foundation is highly tuned to leverage the power of Microsoft SQL Server through embedded Stored Procedure Application Program Interfaces (APIs).

These server-based APIs allow developers and third-party applications to programmatically send and retrieve transaction data directly through Sage 500 ERP in a real-time manner, without compromising the data integrity within the system.

Developers who leverage the SQL Server APIs can retrieve dynamically generated information, such as customer pricing and multicurrency rates, in addition to pushing transaction data such as invoices and payments; this is done without reengineering the complex data validations that are maintained within the Sage 500 ERP system. Sage 500 ERP SQL Server APIs ultimately provide developers with an architecture that enables the seamless system integration your business requires.

A powerful mapping wizard provides detailed knowledge of the Sage 500 ERP database, so you can easily and accurately configure custom database imports.

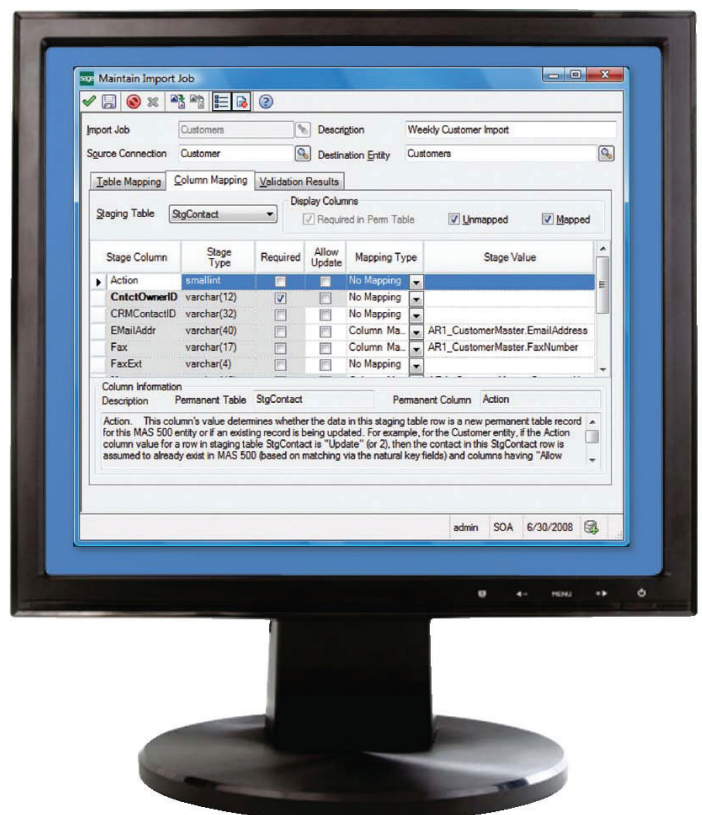
Custom Development

Software Development Kit (SDK)*

You can use the Software Development Kit to add functionality to standard Sage 500 ERP applications, or as the basis for any Visual Basic or SQL business application development project. It is comprised of ActiveX software controls, tools, application wizards, and utilities. The SDK module is the same framework that has been used to develop Sage 500 ERP, and is commonly used to create new reports, build new data entry screens, and develop custom applications.

Available for Visual Basic, the SDK module offers an extensive range of wizards, tools, and utilities to dramatically reduce time to market for enterprise business applications. Decisions that any development team faces include: application look and feel, security model, the implementation of a reporting interface that allows the user to enter parameters for each report, error-handling procedures, extracting data from the database and populating a form, handling a move from one record to another, and implementing concurrency management. SDK delivers solutions for all of these issues, leaving the development team free to focus on database design and application issues rather than “housekeeping” and infrastructure concerns.

*only available with Advanced edition



• Business Desktop and System Manager

Business Desktop is the gateway to any Sage 500 ERP-based application. Business Desktop tools provide system maintenance functions such as user and group maintenance, setup of user preferences, and more. These functions are standard across most types of business applications and are provided as part of the development edition of SDK.

• Office

The Office module is an object that gives form designers a simple, unified interface to the Microsoft Office suite of applications. While the addition of the object to any task is simple, the benefit to you can be substantial. SDK developers can provide this integration feature to their applications and add-ons.

• ActiveX Controls

Sage 500 ERP SDK provides a range of ActiveX controls to handle data entry for an enterprise application. Tools allow the management of the data on a form, validation of data entered, toolbar management, context menu management, and navigation controls.

• Reporting Engine

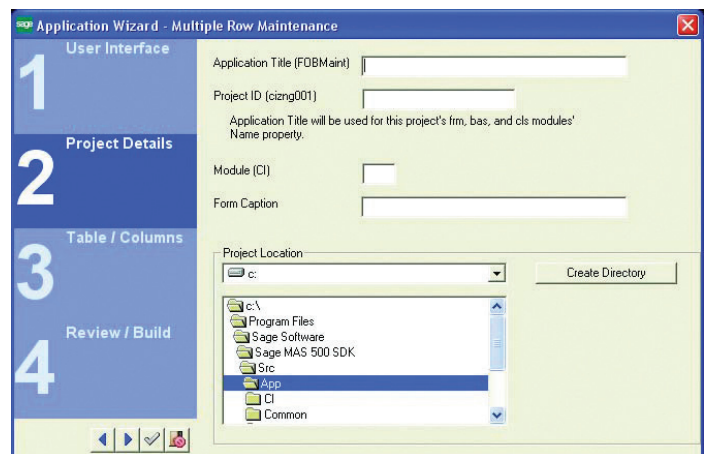
Sage 500 ERP uses SAP Crystal Reports for Sage 500 ERP software for access to your data and generation of management and financial reports. Sage 500 ERP also provides other reporting management functionality. You can enter new report parameters at run time for increased reporting flexibility.

• Software Development Kit Utilities

SDK includes a variety of utilities, including Application Wizard. This tool automatically builds a project based on a table, or tables, that conform to Sage 500 ERP standards, which can dramatically shorten project development time.

Source Code

Source Code lets you extensively customize your application code base by providing the complete Visual Basic source code for your Sage 500 ERP applications. Source Code for any Sage 500 ERP module is available with full documentation and specifications. Although not necessary for most customization projects, Source Code is vital when you require extensive customization, or as a starting point for a significant add-on application. Detailed specifications help developers avoid reverse engineering, allowing them to deliver a solution sooner.



- Application Wizard is just one of the Software Development Kit utilities included with Sage 500 ERP. Application Wizard automatically builds a project based on one of several supplied templates and can dramatically reduce project development time.

About Sage

Sage is a leading global supplier of business management software and services for small and mid-sized businesses. The Sage Group plc, formed in 1981, was floated on the London Stock Exchange in 1989 and now employs more than 12,600 people and supports more than 6 million customers worldwide. For more information about Sage in North America, please visit the company website at www.SageNorthAmerica.com. Follow Sage North America on Facebook, <http://www.facebook.com/SageNorthAmerica>, and Twitter, <http://twitter.com/#!/sagenamerica>.